

**State of Wyoming Corner Record**

(In compliance with the CORNER PERPETUATION AND FILING ACT, Wyoming Statutes, 1977,  
Section 36~11~101, et seq., and the Rules and Regulations of the Board of Registration for Professional  
Engineers and Professional Land Surveyors)

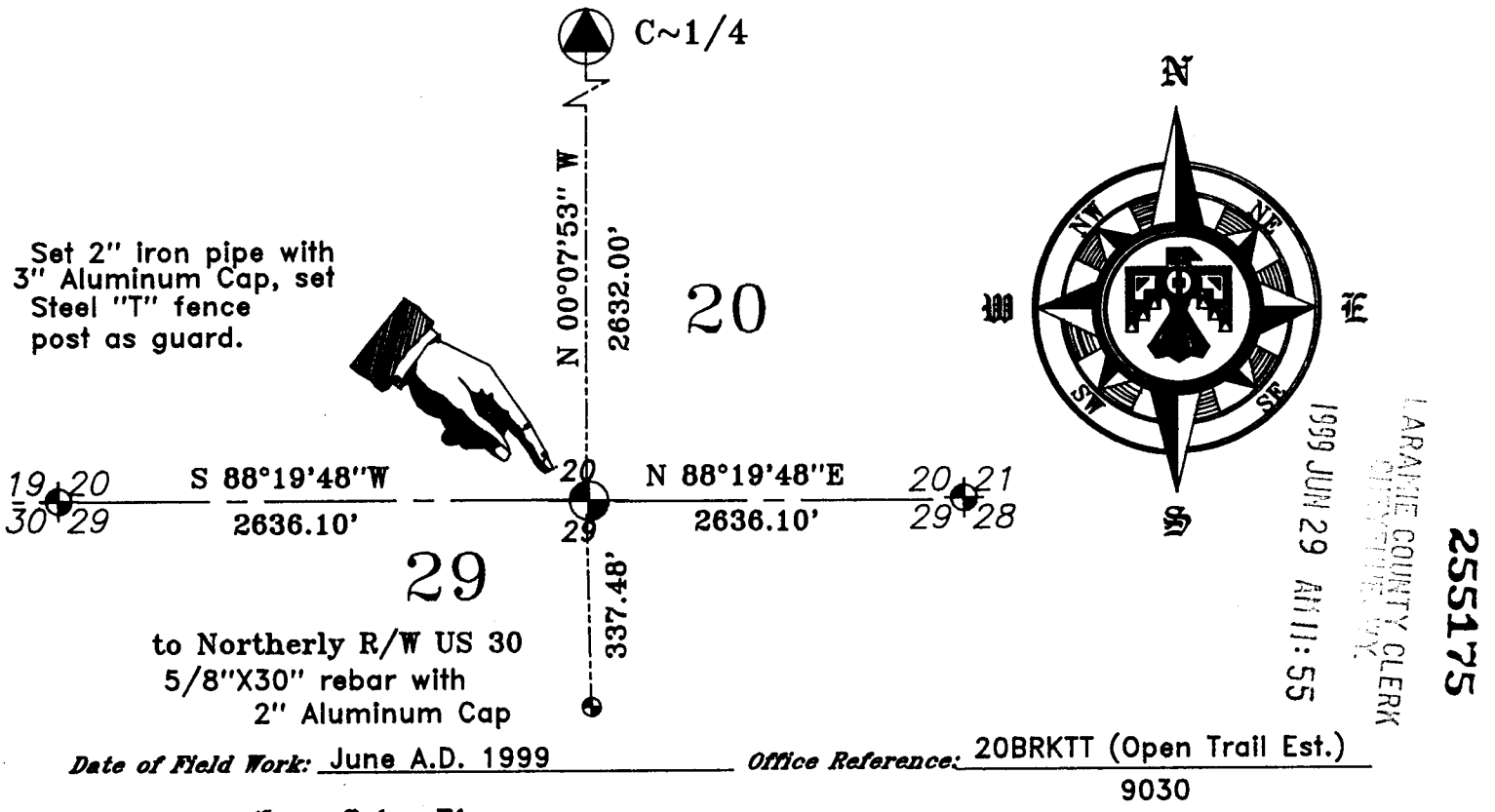
The reverse side of this form may be used if more space is needed.

*The Record of the original survey and the citation of the source of the historical information (if the corner is lost or obliterated). The description of the corner monumentation evidence as found and/or the monument and it's accessories as established to perpetuate the location of this corner. A sketch of the relative location of this Monument, accessories, and reference points with the course and distance to adjacent corner (s) (if determined during this Survey). The Method and Rationale used for the reestablishment of lost and obliterated corner.*

GLO: Edwin James Deputy Surveyor & Alfred M. Rogers under joint contract 20 May 1871, finish 16 June 1871, contract No. 15: "East on a random line between Section 20 & Section 29 (Variation 15.35°E) set temporary 1/4 Section corner at 40 chains; intersect N-S line at 80.18 chains 23 links South of corner of Sections 20,21,28 & 29 from which I run S89°50'W on a true line between Section 29 and Section 20; set Granite stone 16"X8"X7" at 40.09 chains for 1/4; measure 80.18 chains to Section Corner "

Found No evidence of corner or stone. The single proportioned position fell in the cultivated Wheat Field.

SET 2"X34" Iron pipe with an Aluminum Cap being 3" in diameter.

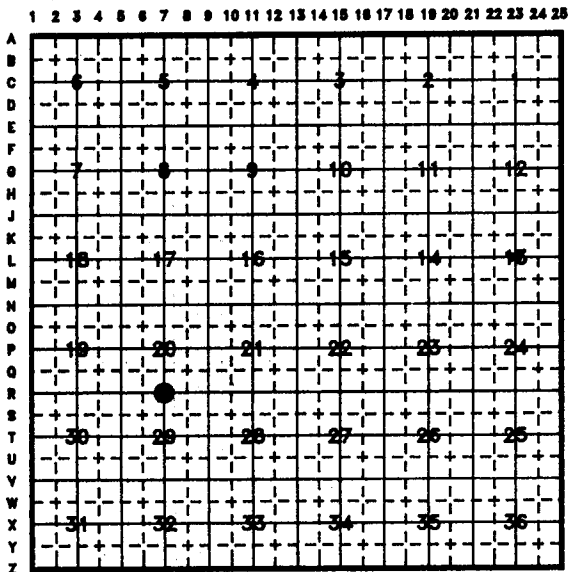


*Cross Index Diagram*

*Firm/Agency, Address*

**Terrestrial Surveying & Mapping Co.**  
*"Your Friendly Neighborhood Surveyor"*  
 1127 Terry Ranch Road  
 Cheyenne, Wyoming 82007  
 Telephone Number: (307) 634~9360

**T. 14 N. R. 63 W. 6th P.M.**



This Corner Record was prepared by me or under my direction and supervision.

**SEAL & SIGNATURE**



Corner Name: 1/4 Section: 20 T. 14 N. R. 63 W. 6th P.M. Cross Index No. R~7